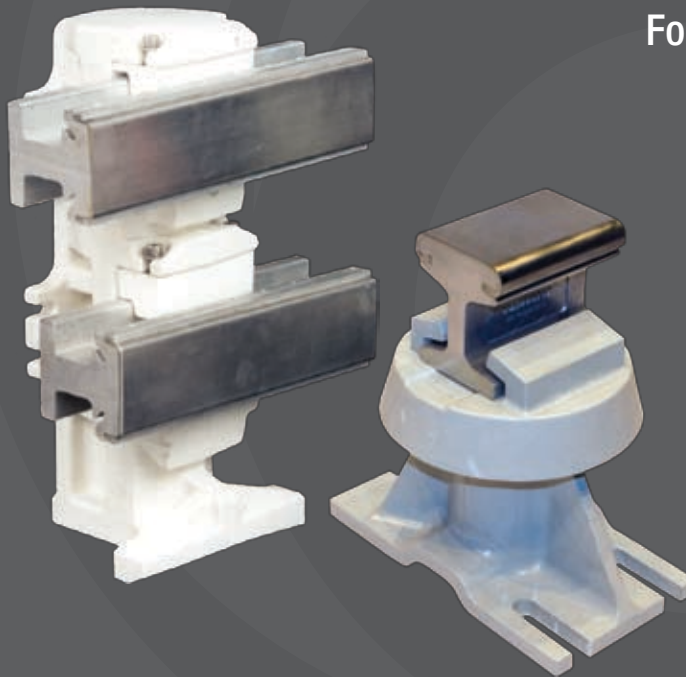




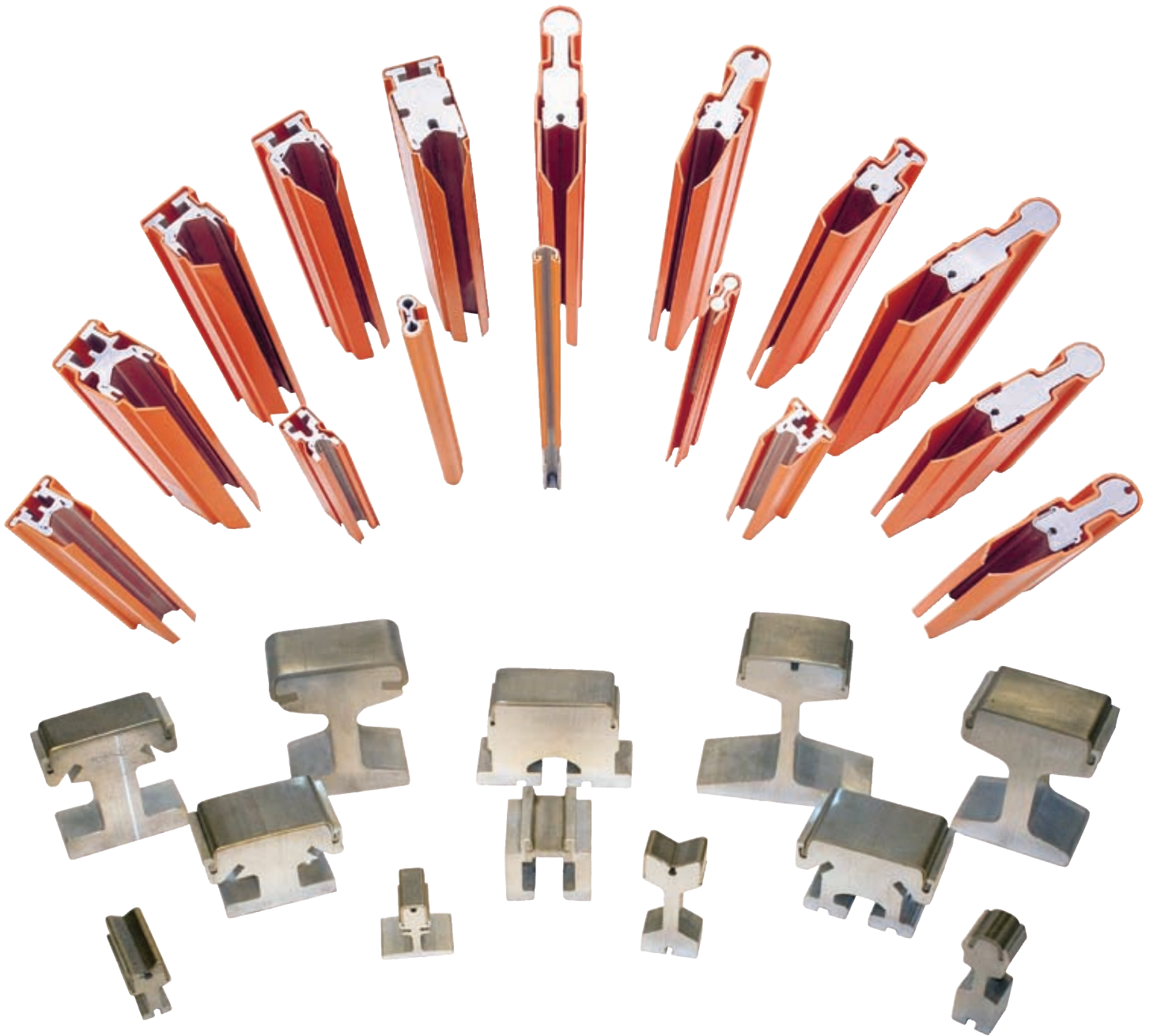
Transit Power Rail

For Third Rail and APM Systems



CONDUCTIX
wampfler
© DELACHAUX GROUP

Proven Conductor Rail Solutions



Conductix / Insul-8 is a proven supplier of transit conductor rail. For over 50 years, we have gained a worldwide reputation for mass transit, people mover, monorail, and advanced light rail transit electrification systems. We set the standard for long term reliability and performance.



ISO 9001:2000 Certified

People Mover Conductor Rail ... To Keep Your Vital Systems Moving

- Diverse Range of Aluminum-Stainless Steel Rail
- Efficient and Long-Wearing
- Capacities from 500 to 6,000 Amps
- Designed and Configured for the Application
- Third Rail and Fourth Rail Systems, to handle multiple conductors for power and control.



“Welded Cap” Rail

- 4 to 6mm Stainless Steel Cap
- Smooth, consistent running surface; no seams
- Weld seams are on the sides of rail



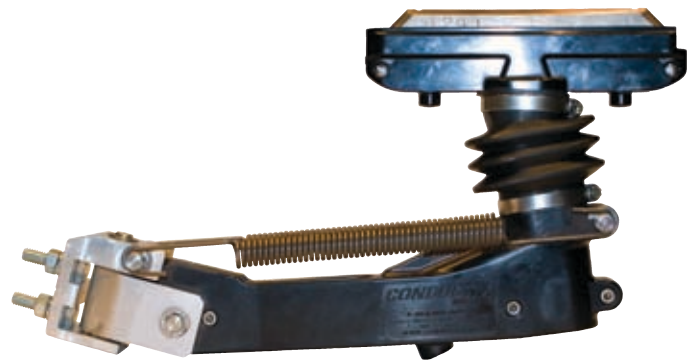
Collector Designs

- Unique articulating collector designs suited to the application
- Positive Contact, high impact components
- Wide variety of designs to suit the application



New Transit Collector

- Superior Tracking
- Enclosed cable; no interference with the shoe
- Easy to change shoes



Conductix / Insul-8 has a proven record of meeting customer requirements in a multitude of operating profiles. We focus on the needs of the project, and support our product designs with our fully staffed test facility.



Every component is verified to meet the needs of the application.

Our mission is to provide cost effective products and services that meet or exceed project expectations through dedicated engineering expertise and support.

Insulator Supports

- Accommodate a wide variety of mounting profiles
- Comply with electrical short circuit demands.
- Made from rugged UV resistant materials
- For third rail, fourth rail, or AC systems with multiple conductors



Other Components

- Expansion sections with electrically isolated supports; for thermal expansion
- Pick-up guide designs to match profile of conductor to profile of collector
- Isolation sections to control power disruption

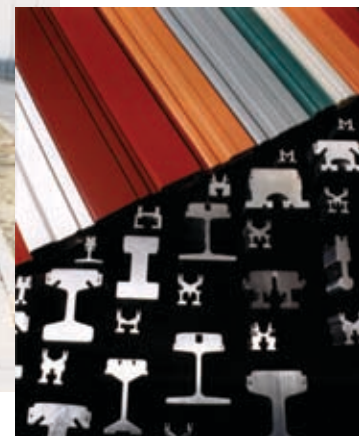
System Testing

- Shoe wear testing
- Fully staffed testing facility
- Test wheel accommodates speeds up to 70 mph (115 km.h.)
- Heat rise testing to 10,000 amps
- High moisture isolation testing
- Short-circuit evaluations



Global Transit Experience

Project	System Integrator	Type of System	Location	Rail Cap.	Year
RAV-Richmond to Vancouver	SNC-Lavalin	Downtown People-Mover	Vancouver, BC	4000	2006
Pearson Airport	DCC	Airport People Mover	Toronto, Canada	500	2004
Lisbon – Oerias Airport	POMA-OTIS	Airport People Mover	Lisbon, Portugal	700	2003
Dallas – Ft. Worth Airport	Bombardier-Pittsburgh	Airport People Mover	Dallas, TX	1200/400	2002
Copenhagen		Downtown People-Mover	Copenhagen, Denmark	4500	2002
Clarian Health Center	Schwager-Davis	Hospital People Mover	Indianapolis, IN	700	2001
Las Vegas Monorail	Bombardier	Downtown People Mover	Las Vegas, NV	1500	2001
Minneapolis Airport	POMA-OTIS	Airport People Mover	Minneapolis, MN	700	2001
Bangkok MRTA	ALSTOM	Downtown People Mover	Bangkok, Thailand	4500	2001
Huntsville Hospital	POMA-OTIS	Hospital People Mover	Huntsville, AL	400	2000
Minneapolis Airport	POMA-OTIS	Airport People Mover	Minneapolis, MN	700	1999
Detroit Airport	POMA-OTIS	Airport People Mover	Detroit, MI	700	1999
Bellagio APM	Yantrak	Casino People Mover	Las Vegas, NV	400	1997
Prima Donna-Buffalo Bill	SDI	Casino People Mover	Primm, NV	700	1997
Newark APM	Adtranz	Airport People Mover	Newark, NJ	900	1994, 1999
Jacksonville Skyway Express	Bombardier Transportation	Downtown People Mover	Jacksonville, FL	1050/700	1996, 1999
Toronto Transit/Scarborough	UTDC	Downtown People Mover	Toronto, ON	3200	1986, 1998, 2003
Detroit People Mover	UTDC	Downtown People Mover	Detroit, MI	3200	1986
Journey to Center of the Earth	Mitsubishi Heavy Ind.	Theme Park	Disney-Tokyo	700	1999
GM Test Track	Disney Imagineering	Theme Park	Disney-Orlando	700	1997
Kuala Lumpur LRT II	SNC-Lavalin, Inc.	Downtown People Mover	Kuala Lumpur, Malaysia	4500	1996
Marlborough Test Track	Raytheon	PRT/Urban Transport	Marlborough, MA	1050	1996
MGM Grand-Bally Monorail	VSL	Casino People Mover	Las Vegas, NV	1500	1995
BC Transit (SkyTrain)	UTDC	Downtown People Mover	Vancouver, BC	4500	1986, 1993
Narita APM	Nippon-Otis	Airport People Mover	Narita, Japan	1000	1986, 1992
DFW TRAAM	Dallas Airport Authority	Airport People Mover	Dallas-Ft. Worth	800	1977, 1998
Busch Gardens Animal Park		Theme Park	Tampa, FL	400	1988
Dallas Zoo	Von Roll	Theme Park	Dallas, TX	400	1988
Disney World Monorail	Disney	Theme Park	Orlando, FL	1500	1978
San Francisco Bay Area (BART)	Rohr Industries	Rapid Transit	San Francisco	6000	1978
Bronx Zoo		Theme Park	New York	500	1978
Dept. of Transportation	Rohr Industries	Test Track	Pueblo, CO	1600	1974
San Diego Zoo		Theme Park	San Diego, CA	500	1972





www.conductix.com

Conductix-Wampfler

10102 F Street
Omaha, NE 68127
USA

Customer Support
Phone: 800 521 4888
Fax: 800 780 8329

Phone: 402 339 9300
Fax: 402 339 9627

info.us@conductix.com
www.conductix.com



BR02008.1