

CEP 50-70-90

CEP Serie Slip Ring are produced in various sizes in order to fully meet the needs of each user and application.

The circular external body allow to maintain small dimensions.

CEP Slip Rings, are widely used where high technical performances, reliability and capability to face hard working cycles are needed.

Usually these products are applied on automatic machines for high volume production like machine tools, rotary tables, spindles, packaging/ labelling and filling machines, etc. ..

CEPs, like almost all Conductix-Wampfler electrical Slip Rings, are suitable to be coupled with Fluidic Rotary Joints.



GENERAL CHARACTERISTICS

Slip Ring type	modular
Size	CEP 50 – CEP 70 – CEP 90
Version	Blind (C) and Through hole (P)
Poles function	Power up to 200A, auxiliary, signal Data transmission up to 100Mbps
Max voltage	600 Vac – 220 Vdc.
Test voltage	2200 Vac.
Max current	200 A
Protection degree	IP 54 (depending on the mounting)
Max RPM	300 rpm (depending on the application)
Mounting position	Vertical / Horizontal.
Working temp.	- 20 °C - + 60 °C.
Rotation sense	clockwise / counterclockwise

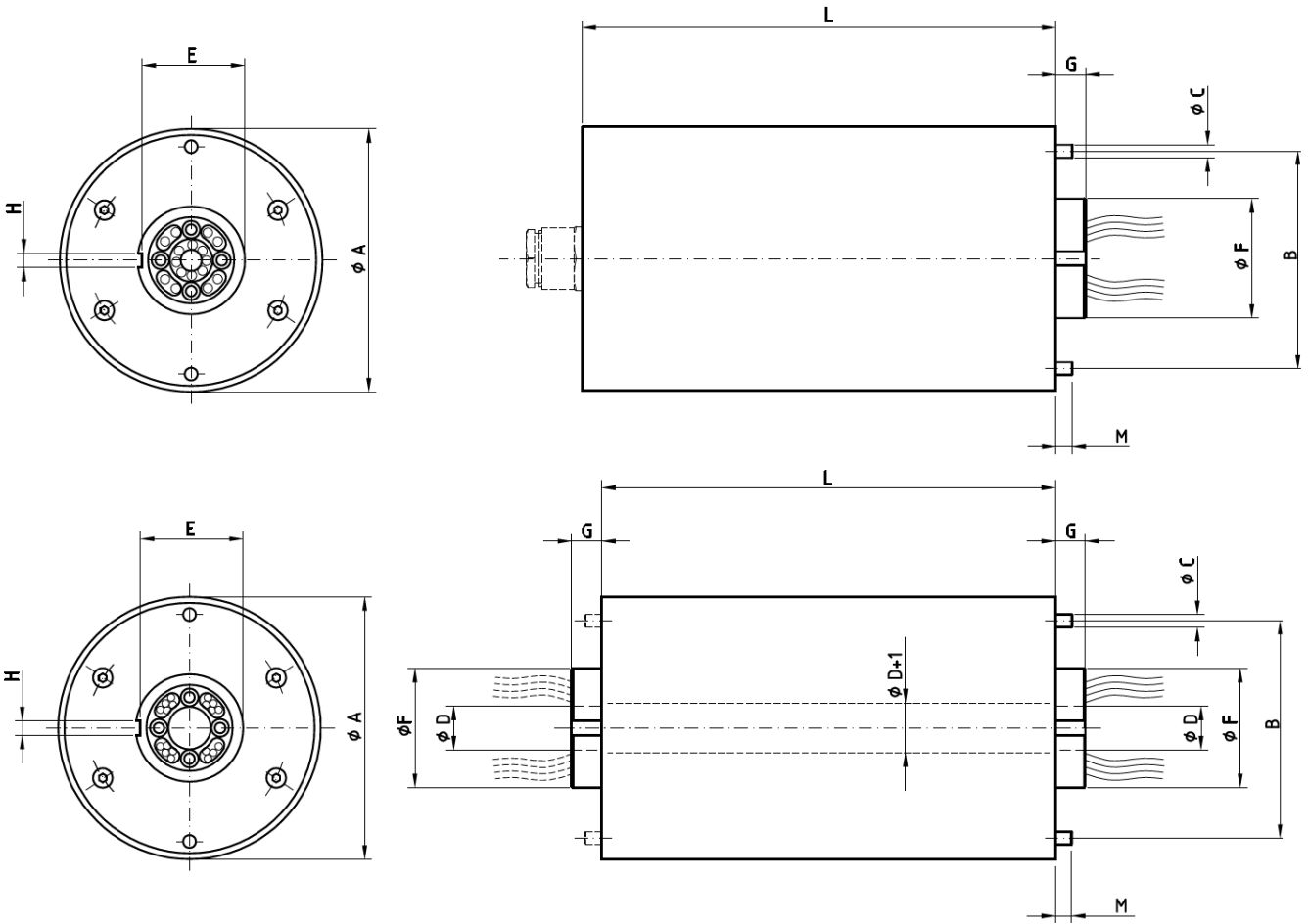
STANDARD CONSTRUCTION

Material	Anodized aluminum
Ring material	Brass for power Silver or gold plated brass for signals and data
Brushes material	Copper based brushes for power Silver based brushes for signal and data Gold wires technology for data
Screws material	Galvanized steel
Rotary shaft	2 ball bearings sealed and lubricated for life
Cables	2m of unicore cables, already connected to rings
Nameplate position	On the top of the cover

OPTIONS

Cable glands and cabling on brushes	Single core sheathed, length on request
Cable on rings	Length different from standard construction lenght (2m)
Fixing accessories	for rotor and stator
Terminal board	for rings cabling
Heating elements	15W, 20W, 30W and 50 W. Voltage 24Vdc, 110/220/230 Vac
Cables	Special cables or Customer cables on request
Connectors	Cables with connectors or connectors on the body of the Slip Ring
Encoder	Fixing interfaces or complete solution following Customer specification
Fluidic Joints	applicable with special construction
Fiber Optic Rotary Joints	applicable with special construction

Drawings and dimensions



CEP	Size	Dimensions [mm]									
		A	B	C	D	E	F	G	H	M	L max.
Blind version	CEP 50 / C	140	105	8h8	/	56	59h8	22	10	10	280
	CEP 70 / C	170	125	10h8	/	76	79h8	22	10	10	463
	CEP 90 / C	200	145	12h8	/	95	99h8	22	12	12	837
Through Hole version	CEP 50 / P	140	105	8h8	24h8	56	59h8	22	10	10	280
	CEP 70 / P	170	125	10h8	39h8	76	79h8	22	10	10	463
	CEP 90 / P	200	145	12h8	49h8	95	99h8	22	12	12	837